

# DIGITAL DISPLAY

for industrial applications



## Content:

Technical Data	....2
Technical Drawing	....3
Models And Accessories	....3

## Series WAY-SX

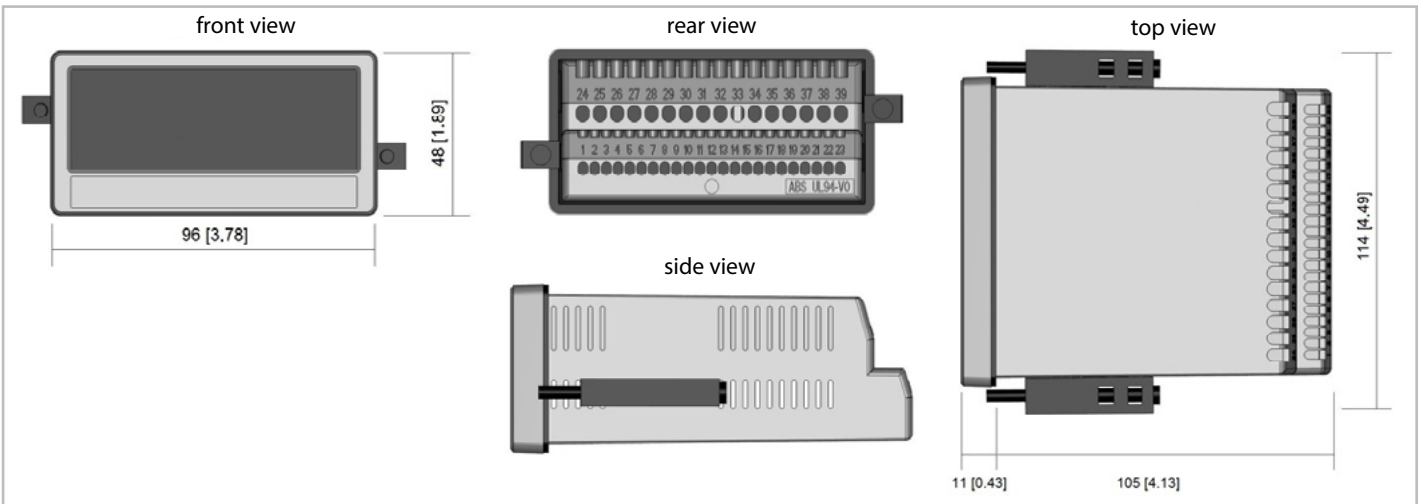
### Key-Features:

- Multifunctional display with touchscreen
- Display range: 8 digits plus sign
- Inputs: SSI, Control
- Input frequencies: up to 1 MHz
- Sensor supply: 24 VDC
- Possible options (combinable):
  - Option AC: power supply 115...230 VAC
  - Option AO: analog output, 4 control outputs and RS232 interface
  - Option AR: analog output, 4 control outputs and RS485 interface
  - Option CO: 4 control outputs and RS232 interface
  - Option CR: 4 control outputs and RS485 interface
  - Option RL: 2 relay outputs

## TECHNICAL DATA

Display	Type: Graphic LCD with backlight and touchscreen Display range: 8 digits plus sign (-99999999...99999999) Digit height: 13 mm Colour: red / green / yellow (selectable)
Connections	screw terminal, 1.5 mm <sup>2</sup> / AWG 16
Power supply DC	Input voltage: 18...30 VDC Consumption: approx. 100 mA (unloaded) Fuse protection: T 0.5 A (external) Protection circuit: reverse polarity protection
Power supply AC (Option AC)	Input voltage: 115...230 VAC (50...60 Hz) Power consumption: approx. 3 VA (unloaded) Fuse protection: external: T 0.1 A
Encoder supply (DC Version)	24 VDC (approx. 1 V lower than the power supply voltage), max. 250 mA or 5 VDC (±15 %), max. 250 mA
Encoder supply (AC Version)	24 VDC (± 15%), (max 150 mA until 45 °C / 80 mA by more than 45 °C) or 5 VDC (±15 %), max. 250 mA
SSI-Interface	Number of inputs (channels): 1 (Clock, /Clock, Data, /Data) Configuration: Master or Slave Format: Binary or Gray code Frequency: max. 1 MHz Load: max. 2 mA / Ri > 10 kΩ / 47 pF
Control inputs	Number of inputs: 3 Format: HTL, PNP (Low 0...3 V, High 9...30 V) Frequency: max. 10 kHz Load: max. 2 mA / Ri > 15 kΩ / 470 pF
Analog output (Option AO / AR)	Voltage output: -10...+10 V (max. 2 mA) Current output: 0/4...20 mA (burden: max. 270 Ω) Resolution: 16 Bit Accuracy: ± 0,1 % Reaction time: < 150 ms
Control outputs (Option AO / AR / CO / CR)	Number of outputs: 4 Format / level: 5...30 V (depend on the COM+ voltage), PNP Output current: max. 200 mA Reaction time: < 1 ms
Relay outputs (Option RL)	Number of outputs: 2 Configuration: potential free changeovers AC-Switching capacity: max. 250 VAC / 3 A / 750 VA DC-Switching capacity: max. 150 VDC / 2 A / 50 W Reaction time: < 20 ms
Serial interface (Option AO / AR / CO / CR)	Format: RS232 (AO / CO), RS485 (AR / CR) Baud rate: 9600, 19200 or 38400 baud
Working temperature	-20...+60 °C
Storage temperature	-25...+70 °C
Housing	Material: ABS, UL 94 V-0 Dimensions: 96 x 48 x 116 mm
Panel cut out	91 x 43 mm
Protection class	IP65 (front), IP20 (rear)
Weight	ca. 200 g
Conformity and standards	EMC 2014/30/EC: EN 61000-6-2, EN 61000-6-3, EN 61000-6-4, EN 61362-1 LV 2014/35/EC: EN 61010-1 RoHS (II) 2011/65/EU, RoHS (III) 2015/863: EN IEC 63000

## TECHNICAL DRAWING



## HOUSINGS

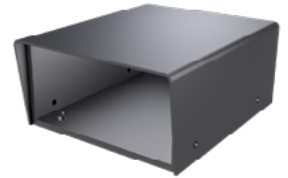
### Aluminium housing GEH0IP65

- black powder coating
- internal grounding terminal
- protection class: IP65
- dimensions (W x H x D): 168 x 83 x 220 mm
- delivery: housing, mounting material
- without cable passages (must be drilled individually)



### Table housing TG9648

- for all displays with front dimensions 96 x 48 mm
- dimensions (W x H x D): 114 x 62 x 176 mm
- delivery: housing, mounting material



## MODELS

WAY-SX-S Standard Display

Options	Description	Combinable with
AC	power supply 115...230 VAC	AO, AR, CO, CR, RL
AO	analog output, 4 control outputs, RS232 interface	AC, RL
AR	analog output, 4 control outputs, RS485 interface	AC, RL
CO	4 control outputs, RS232 interface	AC, RL
CR	4 control outputs, RS485 interface	AC, RL
RL	2 relay outputs	AC, AO, AR, CO, CR

## ACCESSORIES

TG9648	table housing	Configuration	Pre-adjustment according to customer specifications
GEH0IP65	Aluminium housing, IP65		