

DIGITAL DISPLAY

for industrial applications



Content:

Technical Data2
Technical Drawing3
Models And Accessories3

Series WAY-DX and WAY-DXM

Key-Features:

- Multifunctional display with touchscreen
- Display range: 8 digits plus sign
- Inputs: HTL, TTL, RS422, Control
- Input frequencies: up to 1 MHz
- Sensor supply: 24 VDC or 5 VDC
- Possible options (all combinable):
 - Option AC: power supply 115...230 VAC
 - Option AO: analog output, 4 control outputs and RS232 interface
 - Option CO: 4 control outputs and RS232 interface
 - Option RL: 2 relay outputs

TECHNICAL DATA

	WAY-DX	WAY-DXM
Display	Type: Graphic LCD with backlight and touchscreen Display range: 8 digits plus sign (-99999999...99999999) Digit height: 13 mm Colour: red / green / yellow (selectable)	
Connections	screw terminal, 1.5 mm ² / AWG 16	
Power supply DC	Input voltage: 18...30 VDC Consumption: approx. 100 mA (unloaded) Fuse protection: extern: T 0.5 A Protection circuit: reverse polarity protection	
Power supply AC (Option AC)	Input voltage: 115...230 VAC (50 ... 60 Hz) Power consumption: approx. 3 VA (unloaded) Fuse protection: extern: T 1.0 A	
Encoder supply (DC Version)	24 VDC (approx. 1 V lower than the power supply voltage), max. 250 mA	24 VDC (approx. 1 V lower than the power supply voltage), max. 250 mA or 5 VDC (± 15%), max. 250 mA
Encoder supply (AC Version)	24 VDC (± 15%), (max 150 mA until 45 °C / 80 mA by more than 45 °C)	24 VDC (± 15%), (max 150 mA up to 45 °C / 80 mA by more than 45 °C) or 5 VDC (± 15%), max. 250 mA
Incremental inputs	Number of inputs (channels): 2 (A, B) Configuration: PNP, NPN, Namur or Tri-State Format: HTL (Low 0...3 V, High 9...30 V) Frequency: max. 250 kHz Load: max. 6 mA / Ri > 5 kOhm / 470 pF	Number of inputs (channels): 4 (A, /A, B, /B) Configuration: RS422, HTL differential, HTL PNP or HTL NPN RS422: max. 1 MHz (RS422 differential signal > 0,5 V) HTL differential: max. 500 kHz (HTL differential signal > 2 V) HTL PNP / NPN: max. 250 kHz (Low 0...3 V, High 9...30 V) Load: max. 3 mA / Ri > 10 kOhm / 47 pF
Control inputs	Number of inputs: 3 Format: HTL, PNP (Low 0...3 V, High 9...30 V) Frequency: max. 10 kHz Load: max. 2 mA / Ri > 15 kOhm / 470 pF	
Analog output (Option AO)	Voltage output: -10...+10 V (max. 2 mA) Current output: 0/4...20 mA (burden: max. 270 Ohm) Resolution: 16 Bit Accuracy: ± 0,1 % Reaction time: < 150 ms	
Control outputs (Option AO / CO)	Number of outputs: 4 Format / level: 5...30 V (depend on the COM+ voltage), PNP Output current: max. 200 mA Reaction time: < 1 ms	
Relay outputs (Option RL)	Number of outputs: 2 Configuration: potential free changeovers AC-Switching capacity: max. 250 VAC / 3 A / 750 VA DC-Switching capacity: max. 150 VDC / 2 A / 50 W Reaction time: < 20 ms	
Serial interface (Option AO / CO)	Format: RS232 Baud rate: 9600, 19200 or 38400 baud	
Working temperature	-20...+60 °C	
Storage temperature	-25...+70 °C	
Housing	Material: ABS, UL 94 V-0 Dimensions: 96 x 48 x 116 mm	
Panel cut out	91 x 43 mm	
Protection class	IP65 (front), IP20 (rear)	
Weight	approx. 200 g	
Conformity and standards	EMC 2014/30/EU: EN 61000-6-2, EN 61000-6-3, EN 61000-6-4, EN 61362-1 LV 2014/35/EU: EN 61010-1 (option AC and RL only) RoHS (II) 2011/65/EU, RoHS (III) 2015/863: EN IEC 63000	

HOUSINGS

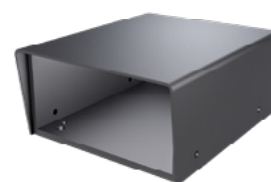
Aluminium housing GEH0IP65

- black powder coating
- internal grounding terminal
- protection class: IP65
- dimensions (W x H x D):
168 x 83 x 220 mm
- delivery:
housing, mounting material
- without cable passages (must be drilled individually)

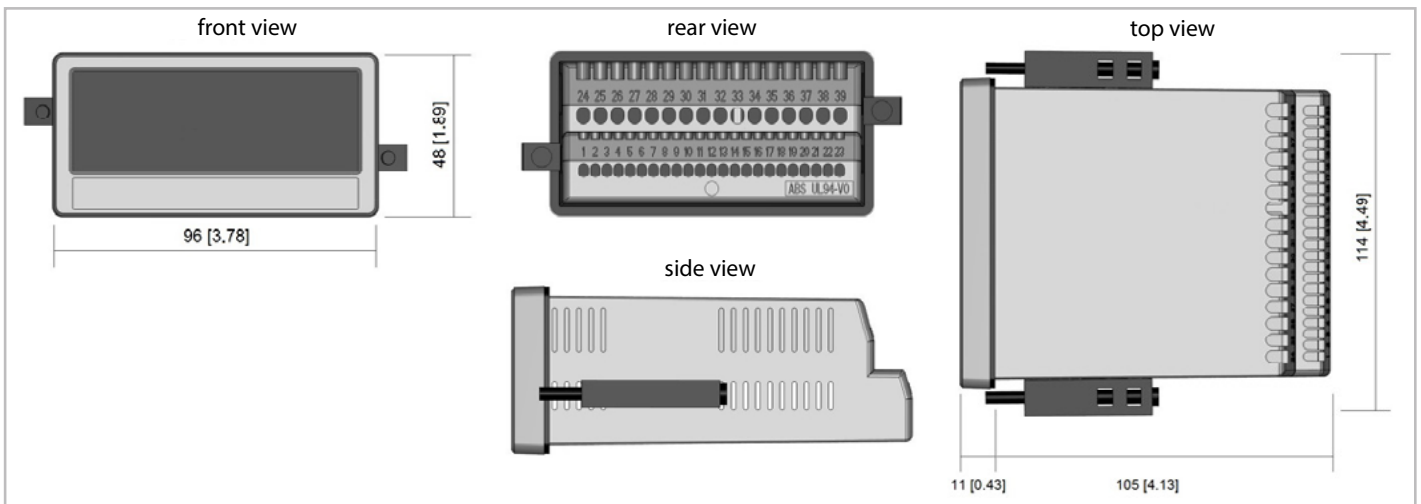


Table housing TG9648

- for all displays with front dimensions
96 x 48 mm
- dimensions (W x H x D):
114 x 62 x 176 mm
- delivery: housing, mounting material



TECHNICAL DRAWING



MODELS

WAY-DX-S	Input HTL
WAY-DX-RL	Input HTL, 2 relay outputs
WAY-DX-AO	Input HTL, analog output, 4 control outputs, RS232 interface
WAY-DX-CO	Input HTL, 4 control outputs, RS232 interface
WAY-DX-CO-RL	Input HTL, 4 control outputs, RS232 interface, 2 relay outputs
WAY-DX-AO-RL	Input HTL, analog output, 4 control outputs, RS232 interface, 2 relay outputs
WAY-DX-AC	Input HTL, power supply 115...230 VAC
WAY-DX-AC-RL	Input HTL, power supply 115...230 VAC, 2 relay outputs
WAY-DX-AC-AO	Input HTL, power supply 115...230 VAC, analog output, 4 control outputs, RS232 interface
WAY-DX-AC-CO	Input HTL, power supply 115...230 VAC, 4 control outputs, RS232 interface
WAY-DX-AC-AO-RL	Input HTL, power supply 115...230 VAC, analog output, 4 control outputs, RS232 interface, 2 relay outputs
WAY-DX-AC-CO-RL	Input HTL, power supply 115...230 VAC, 4 control outputs, RS232 interface, 2 relay outputs
WAY-DXM-S	Input HTL/TTL/RS422
WAY-DXM-RL	Input HTL/TTL/RS422, 2 relay outputs
WAY-DXM-AO	Input HTL/TTL/RS422, analog output, 4 control outputs, RS232 interface
WAY-DXM-CO	Input HTL/TTL/RS422, 4 control outputs, RS232 interface
WAY-DXM-CO-RL	Input HTL/TTL/RS422, 4 control outputs, RS232 interface, 2 relay outputs
WAY-DXM-AO-RL	Input HTL/TTL/RS422, analog output, 4 control outputs, RS232 interface, 2 relay outputs
WAY-DXM-AC	Input HTL/TTL/RS422, power supply 115...230 VAC
WAY-DXM-AC-RL	Input HTL/TTL/RS422, power supply 115...230 VAC, 2 relay outputs
WAY-DXM-AC-AO	Input HTL/TTL/RS422, power supply 115...230 VAC, analog output, 4 control outputs, RS232 interface
WAY-DXM-AC-CO	Input HTL/TTL/RS422, power supply 115...230 VAC, 4 control outputs, RS232 interface
WAY-DXM-AC-AO-RL	Input HTL/TTL/RS422, power supply 115...230 VAC, analog output, 4 control outputs, RS232, 2 relay outputs
WAY-DXM-AC-CO-RL	Input HTL/TTL/RS422, power supply 115...230 VAC, 4 control outputs, RS232 interface, 2 relay outputs

ACCESSORIES

TG9648	table housing	Configuration	Pre-adjustment according to customer specifications
GEH0IP65	Aluminium housing, IP65		