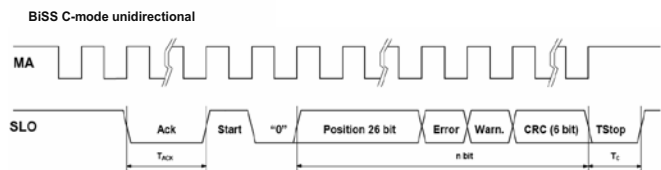
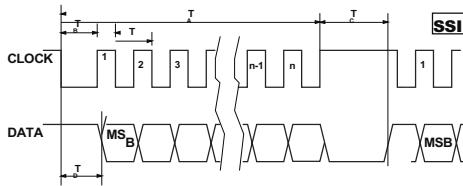


OUTPUT SIGNALS

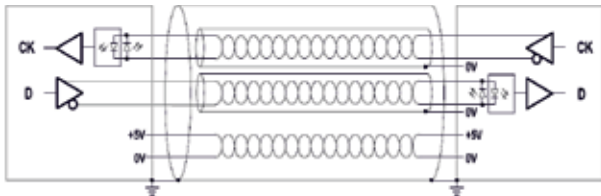
Interface	SSI Binary - Gray	BiSS C unidirectional
Signals level	EIA RS 485	EIA RS 485
Clock frequency	0.1 ÷ 1.2 MHz	0.1 ÷ 4 MHz
n	Position bit	26 + 2 + bit
Tc	12 ÷ 65 µs	12 ÷ 20 µs



CABLE

Cable for serial output:

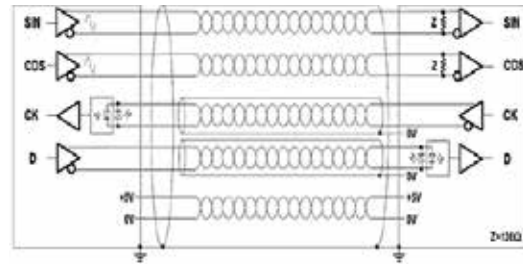
- 6-wire shielded cable, Ø=7 mm, PVC external sheath, with low friction coefficient, oil-resistant, suitable for continuous movements
- conductors section: supply 0.25 mm², signals 0.25 mm²
- cable's bending radius should not be lower than 35 mm.



NOTE: Encoder is supplied with flexible cable, that consists of twisted pair of wires (for informational signals SSI-BiSS).

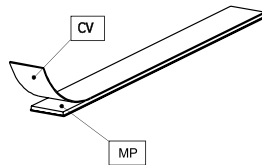
Cable for analog output + serial output:

- 10-wire shielded cable, Ø = 7.1 mm, PUR external sheath. Inside the cable, a further shield for the twisted pair of the digital signals (SSI-BiSS) is presented.
- conductors section: supply 0.35 mm², signals 0.10 mm²
- cable's bending radius should not be lower than 45 mm.
- In case of cable extension, it is necessary to guarantee:
 - electrical connection between the body of the connectors and the cables shield;
 - minimum power supply voltage of 5 V to the head.



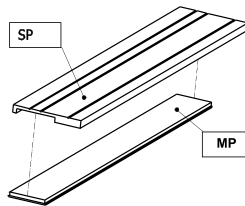
PROTECTIVE BAND CV

Stainless steel cover CV (width 10 mm, thickness 0,3 mm) for magnetic band MP protection is glued on magnetic band.



PROTECTIVE SUPPORT SP

Aluminium protective support SP for magnetic band MP protection. Fixed on machine surface and holds magnetic band. It is not possible to use the support SP if the magnetic band is already covered by stainless steel band CV.



MAGNETIC BAND MP200A

Pole pitch	2+ 2 mm
Accuracy (at 20 °C)	±20; ±80 µm/m
Width	10 mm
Thickness	1,3 mm
Length	30 m max.
Bend radius	80 mm min.
Weight of magnetic band	65 g/m
Weight of protective cover	25 g/m
Operating temperature	0...+70 °C
Storage temperature	20...+80 °C

ACCESSORIES

CONNECTORS FOR CABLE	B12 12-pin round connector	C12 12-pin round connector	D9 9-pin flat connector	D15 15-pin flat connector	RS10 10-pin round connector	ONC 10-pin round connector
-----------------------------	-------------------------------	-------------------------------	----------------------------	------------------------------	--------------------------------	-------------------------------

DIGITAL READOUT DEVICES	CS3000	CS5000
--------------------------------	--------	--------

ORDER FORM

MK	- XXXX - XX - X - XX / XX - XX / XX - XX / XX						
ABSOLUTE RESOLUTION:	OUTPUT SIGNALS:	INCREMENTAL SIGNALS:	MAGNETIC BAND LENGTH:	PROTECTIVE STEEL COVER LENGTH:	OR ALUMINIUM PROTECTIVE SUPPORT:	CABLE LENGTH AND OUTPUT:	CONNECTOR TYPE:
F10 - 1µm F50 - 5µm F100 - 10µm F500 - 50µm F1000 - 100µm F5000 - 500µm	AS0 - SSI programmable S1 - SSI binary S2 - SSI binary+even parity S3 - SSI binary+odd parity S4 - SSI binary+error S5 - SSI binary+even parity+error S6 - SSI binary+odd parity+error S7 - SSI Gray B1 - BiSS binary	W - without incremental signals V - 1Vpp	MP200A/01 - 1m MP200A/02 - 2m MP200A/03 - 3m MP200A/20 - 20m	CV/01 - 1m CV/02 - 2m CV/03 - 3m ...	SP/01 - 1m SP/02 - 2m SP/03 - 3m ...	A01-1m axial A02-2m R01-1m radial R02-2m ...	W - without connector B12 - round, 12 pins C12 - round, 12 pins D9 - flat, 9 pins D15 - flat, 15 pins

ORDER EXAMPLE: 1) MK-F10-S2-V-MP200A/02- SP/02-A02/C12