

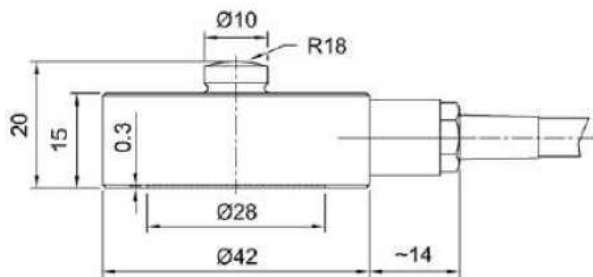
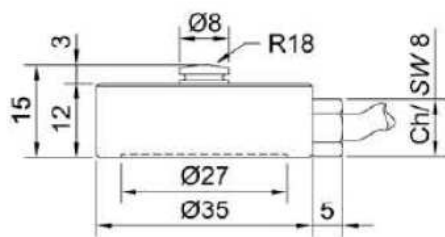
Data Sheet: CM.302.R5

www.aep.it

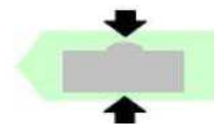
# CM-CMAMP

Dinamometro  
Dynamometer

Dimensioni *Dimensions* [mm]



Linearità - Isteresi  
Linearity - Hysteresis



≤±0.20%



2 mV/V

Uscita standard  
Standard Output

4-20mA  
(2 wires)

Uscita Amplificata  
Amplified Output

CARICO NOMINALE NOMINAL LOAD	CODICE CODE		
	2mV/V Ø35	2mV/V Ø42	4-20mA Ø42
100 kg	CCM100K3	CCM42100K3	CCMAMP100K3
250 kg	CCM250K3	CCM42250K3	CCMAMP250K3
500 kg	CCM500K3	CCM42500K3	CCMAMP500K3
1000 kg	CCM1T3	CCM421T3	CCMAMP1T3
2500 kg	CCM2T53	CCM422T53	CCMAMP2T53
3500 kg	/	CCM423T53	CCMAMP3T53
5000 kg	/	CCM425T3	CCMAMP5T3

Dimensioni compatte  
Interamente saldata al LASER

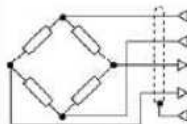
Compact size  
Completely LASER welded

## Collegamenti Elettrici *Electrical Connections*

STANDARD: 2mV/V OUTPUT

Cavo schermato PVC 70°C, Ø 4.2mm a 4 conduttori Ø 0.14mm<sup>2</sup> stagnati.

PVC 70°C shielded cable, Ø 4.2mm with 4 tinned Ø 0.14mm<sup>2</sup> conductors.

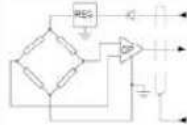
<i>Dynamometer</i>	OUTPUT	CABLE	CAVO	MIL7M <i>(optional)</i>	DB9M <i>(optional)</i>
	EXCITATION+ EXCITATION - OUTPUT+ OUTPUT-	Red Black White Yellow Shield*	Rosso Nero Bianco Giallo Schermo*	C B A D E	3 4 1 2 5

\* Collegato al corpo del dinamometro. / Connected to the body of the dynamometer.

OPTIONAL: 4-20mA OUTPUT

Cavo schermato PVC 70°C, Ø 4.2mm a 4 conduttori Ø 0.14mm<sup>2</sup> stagnati.

PVC 70°C shielded cable, Ø 4.2mm with 4 tinned Ø 0.14mm<sup>2</sup> conductors.

<i>Dynamometer</i>	OUTPUT	CABLE	CAVO	MIL7M <i>(optional)</i>	DB9M <i>(optional)</i>
	POWER+ SIGNAL - N.C. N.C.	Red Black White Yellow Shield*	Rosso Nero Bianco Giallo Schermo*	C B A D E	3 4 1 2 5

\* Collegato al corpo del dinamometro. / Connected to the body of the dynamometer.

### Wimesure SARL

54, rue de Versailles  
78460 CHEVREUSE  
Tél. 01 30 47 22 00 • Fax. 01 30 47 28 29  
www.wimesure.fr • info@wimesure.fr

RCS Versailles B 399 176 783  
SARL au Capital de 22867,35 Euros  
Siret 399 176 783 000 13 • Code NAF 4669B • N° TVA : FR 80 399 176 783  
Domiciliation : CRCA Chevreuse N°18206-00074-24999152001-55

**Dati Tecnici**
**Technical Data**


CARICO NOMINALE	NOMINAL LOAD	100-250-500-1000-2500 kg <sup>(1)</sup>	2500-3500-5000 kg <sup>(1)</sup>
SENSIBILITA' NOMINALE	NOMINAL SENSITIVITY	2 mV/V	
TOLLERANZA DI CALIBRAZIONE	CALIBRATION TOLERANCE	≤ ±0.2% F.S.	
EFFETTO TEMPERATURA (10 °C): a) sullo zero b) sulla sensibilità	TEMPERATURE EFFECT (10 °C): a) on zero b) on sensitivity	≤ ± 0.030% F.S. ≤ ± 0.025% F.S.	
LINEARITA'	LINEARITY	≤ ±0.20% F.S.	
ISTERESI	HYSTERESIS	≤ ±0.20% F.S.	
RIPETIBILITA'	REPEATABILITY	≤ ±0.05% F.S.	
RESISTENZA DI INGRESSO	INPUT RESISTANCE	400 ± 20Ω	
RESISTENZA DI USCITA	OUTPUT RESISTANCE	350 ± 2Ω	
RESISTENZA DI ISOLAMENTO	INSULATION RESISTANCE	> 5 GΩ	
BILANCIAMENTO	ZERO BALANCE	≤ ±1% F.S.	
ALIMENTAZIONE DI RIFERIMENTO	RECOMMENDED SUPPLY VOLTAGE	10 V	
ALIMENTAZIONE NOMINALE	NOMINAL SUPPLY VOLTAGE	1-15 V	
TENSIONE DI ALIMENTAZIONE MASSIMA	MAXIMUM SUPPLY VOLTAGE	18 V	
VALORI MECCANICI LIMITE: a) carico di servizio b) carico limite c) carico di rottura d) massimo carico trasversale e) carico dinamico limite	MECHANICAL LIMIT VALUES: a) service load b) max permissible load c) breaking load d) max transverse load e) max permissible dynamic load	120% F.S. 150% F.S. >300% F.S. 50% F.S. 50% F.S.	
FRECCIA MASSIMA AL CARICO NOMINALE	DISPLACEMENT AT NOMINAL LOAD	~ 0.2 mm	
TEMPERATURA DI RIFERIMENTO	REFERENCE TEMPERATURE	+23 °C	
CAMPO NOMINALE DI TEMPERATURA	TEMPERATURE NOMINAL RANGE	-10/+40 °C	
CAMPO TEMPERATURE DI ESERCIZIO	SERVICE TEMPERATURE	-20/+70 °C	
TEMPERATURA DI STOCCAGGIO	STORAGE TEMPERATURE	-20/+80 °C	
PESO	WEIGHT	0.13 kg	0.20 kg
CLASSE DI PROTEZIONE (EN 60529)	PROTECTION CLASS (EN 60529)	IP67	
MATERIALE DINAMOMETRO	EXECUTION MATERIAL	Acciaio inox / Stainless Steel	
LUNGHEZZA CAVO	CABLE LENGTH	3 m	

<sup>(1)</sup> A richiesta calibrazioni in N / N calibrations on request.

**OPZIONI OPTIONALS**

USCITA AMPLIFICATA	AMPLIFIED OUTPUT	4-20mA (2 wires)
TOLLERANZA DI CALIBRAZIONE	SENSIVITY TOLERANCE	≤ ±0.1 % F.S.
BILANCIAMENTO DI ZERO	ZERO BALANCE	≤ ±1.0 % F.S.
ALIMENTAZIONE NOMINALE	NOMINAL POWER SUPPLY	12-24Vdc
ASSORBIMENTO MAX.:	MAX. ABSORPTION:	30mA
RESISTENZA DI CARICO:	LOADING RESISTANCE:	from 0 to 470Ω
CONNESSIONE	CONNECTION	MIL 7 Poles Male connector or DB9M
CLASSE DI PROTEZIONE (EN 60529)	PROTECTION CLASS (EN 60529)	IP65