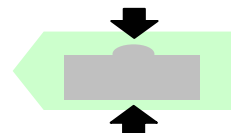


Accessori Accessories

**A**



**RoHS**  
COMPLIANCE

Dinamometro a basso profilo *Low profile dynamometer*

Interamente saldata al LASER *Completely LASER welded*

Alta stabilità a lungo termine *Long term high stability*


Per applicazioni dinamiche *For dynamic applications*

**ISO 376**

Norme di riferimento *Reference standards:*  
ISO 376 • ASTM E74



Certificato SIT a richiesta  
*SIT certificate on request*

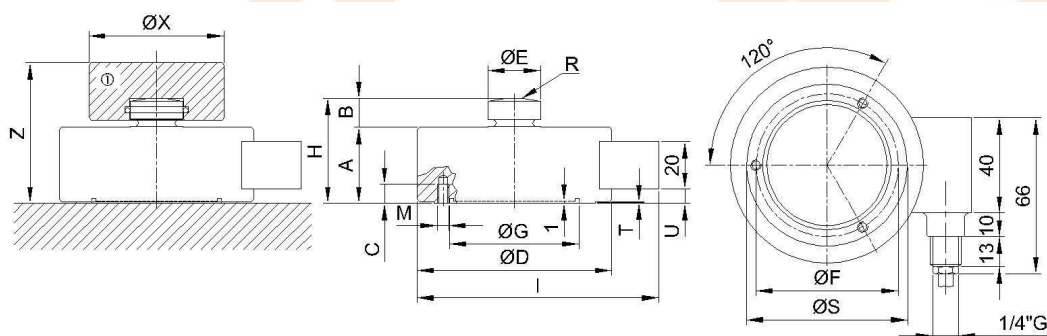
**OPZIONE:**  II 2 G Ex ib IIC T5  
**OPTION :** II 2 D Ex ibD 21 T115°C

Cert.: TÜV 06 ATEX 553026 X  
Cert.: TÜV 06 ATEX 553026 X

Dimensioni *Dimensions*

[mm]

CODE (Class 0.5)	CODE (Class 1)	LOAD	A	B	C	ØD	ØE	ØF	ØG	H	I	M	nM	R	S	T	U
CC8S825KNI05	CC8S825KNI15	5 kN	32	12	11	82	22	68	52.3	44	102	M8	3	50	60	0.3	6
CC8S8210KNI05	CC8S8210KNI15	10 kN															
CC8S8225KNI05	CC8S8225KNI15	25 kN															
CC8S8250KNI05	CC8S8250KNI15	50 kN															
CC8S8275KNI05	CC8S8275KNI15	75 kN															
CC8S82100KNI05	CC8S82100KNI15	100 kN	50	14	12	126	35	90	77.3	64	148	M8	3	160	100	0.5	15
CC8S126200KNI05	CC8S126200KNI15	200 kN															
CC8S126300KNI05	CC8S126300KNI15	300 kN															
CC8S165500KNI05	CC8S165500KNI15	500 kN	60	20	20	165	60	130	92.3	80	188	M16	4	300	115	1	18
CC8S165750KNI05	CC8S165750KNI15	750 kN															
CC8S1651MNI05	CC8S1651MNI15	1000 kN															



C8S:	CODE		ACCESSORIES (optional):	ACCESSORI (opzionali):	Z	ØX
5, 10, 25, 50, 75, 100 kN	CTIC22	ⓐ	Loading head.	Testa di carico.	59	57
200, 300 kN	CTIC35	ⓐ	Loading head.	Testa di carico.	82	76
500, 750, 1000 kN	CTIC60	ⓐ	Loading head.	Testa di carico.	106	126

**Dati Tecnici**
**Technical Data**


Classe di precisione: ISO 376	Accuracy class: ISO 376	0.5 <sup>(1)</sup>		1
CARICO NOMINALE	NOMINAL LOAD	5-10-25-50 kN 100 kN	200-300 kN	500-750 kN 1000 kN
<b>ERRORI RELATIVI (al valore letto)</b> a) ripetibilità 0°-120°-240°(b) b) interpolazione (fc) c) reversibilità (u) d) zero (fo)	<b>RELATIVE ERROR (at reading)</b> a) repeatability 0°-120°-240°(b) b) interpolation (fc) c) reversibility (u) d) zero (fo)	≤ ±0.090% <sup>(2)</sup> ≤ ±0.045% <sup>(2)</sup> ≤ ±0.120% <sup>(2)</sup> ≤ ±0.020% F.S.		≤ ±0.150% <sup>(2)</sup> ≤ ±0.090% <sup>(2)</sup> ≤ ±0.200% <sup>(2)</sup> ≤ ±0.020% F.S.
<b>LINEARITA'</b> <b>ISTERESI</b>	<b>LINEARITY</b> <b>HYSTERESIS</b>	≤ ±0.03% F.S. ≤ ±0.03% F.S.		
<b>EFFETTO DELLA TEMPERATURA (10°C)</b> a) sullo zero b) sulla sensibilità	<b>TEMPERATURE EFFECT (10°C)</b> a) on zero b) on sensitivity	≤ ±0.030% F.S. ≤ ±0.020% F.S.		
<b>SENSIBILITA' NOMINALE</b> <b>TOLLERANZA DI CALIBRAZIONE</b>	<b>NOMINAL SENSITIVITY</b> <b>SENSIVITY TOLERANCE</b>	2mV/V ≤ ±0.1% F.S.		
<b>RESISTENZA DI INGRESSO</b> <b>RESISTENZA DI USCITA</b> <b>RESISTENZA DI ISOLAMENTO</b> <b>BILANCIAMENTO DI ZERO</b> <b>ALIMENTAZIONE DI RIFERIMENTO</b> <b>ALIMENTAZIONE NOMINALE</b> <b>ALIMENTAZIONE MAX.</b>	<b>INPUT RESISTANCE</b> <b>OUTPUT RESISTANCE</b> <b>INSULATION RESISTANCE</b> <b>ZERO BALANCE</b> <b>RECOMMENDED SUPPLY VOLTAGE</b> <b>NOMINAL SUPPLY VOLTAGE</b> <b>MAXIMUM SUPPLY VOLTAGE</b>	700±2Ω 705±2Ω > 5 GΩ ≤ ± 1% F.S. 10 V 1-15 V 18 V		
<b>VALORI MECCANICI LIMITE RIFERITI AL CARICO NOMINALE :</b> a) carico di servizio b) carico limite c) carico di rottura d) massimo carico trasversale e) carico dinamico limite <b>FRECCIA MAX. AL CARICO NOMINALE</b>	<b>MECHANICAL LIMIT VALUES REFERRED TO NOMINAL LOAD :</b> a) service load b) max permissible load c) breaking load d) max transverse load e) max permissible dynamic load <b>DISPLACEMENT AT NOMINAL LOAD</b>	120% 150% >300% 50% 75% -0.06 mm    -0.16 mm    -0.23 mm		
<b>TEMPERATURA DI RIFERIMENTO</b> <b>CAMPO NOMINALE DI TEMPERATURA</b> <b>TEMPERATURA DI ESERCIZIO</b> <b>TEMPERATURA DI STOCCAGGIO</b>	<b>REFERENCE TEMPERATURE</b> <b>TEMPERATURE NOMINAL RANGE</b> <b>SERVICE TEMPERATURE</b> <b>STORAGE TEMPERATURE</b>	+23°C -10/+40 °C -10/+70 °C -20/+80 °C		
<b>PESO</b> <b>CLASSE DI PROTEZIONE (EN 60529)</b> <b>MATERIALE DINAMOMETRO</b> <b>LUNGHEZZA CAVO</b> <b>VITI DI FISSAGGIO:</b> a) diametro b) classe di resistenza c) coppia di serraggio	<b>WEIGHT</b> <b>PROTECTION CLASS (EN 60529)</b> <b>EXECUTION MATERIAL</b> <b>CABLE LENGTH</b> <b>FIXING SCREWS</b> a) diameter b) resistance class c) tightening torque	2.08 kg	3.42 kg IP67	9.43 kg
		Acciaio Inox / Stainless Steel 5m M8    M8    M16 12.9    12.9    12.9 80 Nm    80 Nm    230 Nm		

<sup>(1)</sup> Test e calibrazioni eseguite in con il dinamometro montato al supporto e viti di fissaggio correttamente serrate.

Tests and calibrations performed with the dynamometer mounted on a bearing support with correctly tightened clamping screws.

<sup>(2)</sup> Errori percentuali calcolati al valore letto, min. 1/10 del carico nominale.

Percentage errors referred to reading, min. 1/10 of nominal load.

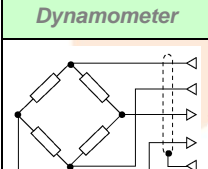
A richiesta calibrazioni in kg.  
kg calibration on request.

A richiesta classificazioni secondo ASTM E74.  
Classifications according ASTM E74 on request.

**Collegamenti Elettrici Electrical Connections**

Cavo schermato PVC 105°C, Ø 5.2mm a 4 conduttori Ø 0.35mm<sup>2</sup> stagnati.

PVC 105°C shielded cable, Ø 5.2mm with 4 tinned Ø 0.35mm<sup>2</sup> conductors.

Dynamometer	OUTPUT	CABLE	CAVO	MIL7M (optional)	DB9M (optional)
	EXCITATION+ EXCITATION - OUTPUT+ OUTPUT-	Red Black White Yellow Shield*	Rosso Nero Bianco Giallo Schermo*	C B A D E	3 4 1 2 5

\* Collegato al corpo del dinamometro. / Connected to the body of the dynamometer.