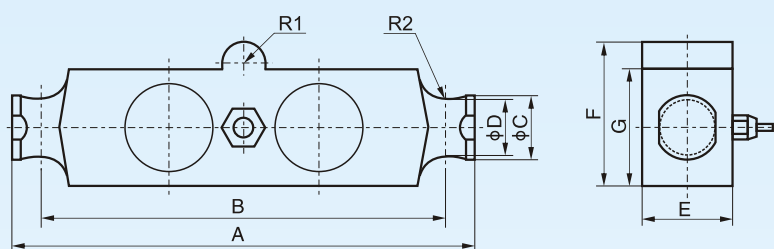


Model 4517/4597 Beam-type Load Cells



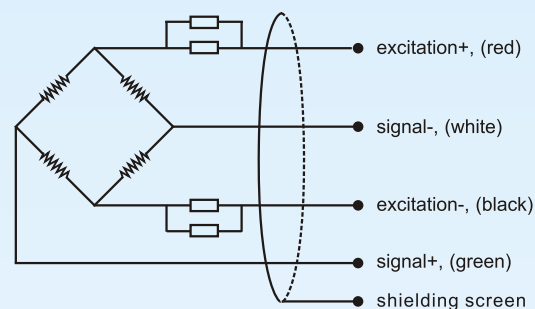
type: double-ended shear beam load cell
material: alloy steel (4517) / stainless steel (4597)
surface: nickel plated treatment (for 4517 only)
protection: IP 66, IP 67
application: catalyst vessels, batching plant and truck weighers

Dimensions:



cap. (Klb)	A	B	C	D	E	F	G	R1	R2
10 ~ 25	203.2	180.95	25.4	20.32	36.58	58.67	49.28	9.65	9.65
30 ~ 75	215.9	184.15	50.8	44.45	49.53	76.2	62.23	12.7	19.05

Electrical connection:



Specifications:

capacity	klb	10, 20, 30, 40, 50, 60, 75
rated output	mV/V	3.0 ± 0.003
accuracy	%FSO	± 0.02
zero unbalance	%FSO	± 1.0
non-linearity	%FSO	± 0.02
hysteresis	%FSO	± 0.02
repeatability	%FSO	± 0.01
creep	%FSO/30min	± 0.02
temperature coefficient of SPAN	%FSO/10°C	0.02
temperature coefficient of ZERO	%FSO/10°C	0.02
input resistance	Ω	760 ± 30
output resistance	Ω	700 ± 10
insulation resistance	MΩ	≥ 5000@50 VDC
excitation recommended	V	9~12 DC/AC
maximum excitation	V	18 DC/AC
compensated temperature range	°C	-10 ~ +55
operating temperature range	°C	-35 ~ +65
safe overload	%FS	150
ultimate overload	%FS	200
cable length	m, shielded PVC cable	13 (Φ6 mm 4-wire)

The listed specifications are subject to change without prior notice.

How to order: model - capacity - output - accuracy - IP rating - cable length - customer specific requests
ordering code example: 4597 - 50klb - 3mV/V - 0.02%fso - IP 67 - 13m - no specific requests

BCM SENSOR TECHNOLOGIES BVBA