



- Measurement length 1000 mm to 5700 mm
- 0,8 mm stainless steel wire diameter
- High resolution options;
0,4 - 0,2 - 0,1 mm / Pulse (or optional)
- 5 VDC or 10...30 VDC Power supply
- A, B, Z, /A, /B, /Z Encoder Signal Outputs (Push-Pull or Line Driver)
- High strength stainless steel wire
- 2 m/s maximum speed
- Wide working temperature range of -25 to +85 °C
- Shock/Vibration resistant
- 2,4N Maximum extension force
- Aluminum anodized body

AWE 220 wire encoders are incremental wire transducers that turn a linear motion into coded digital pulses. Optionally other stroke lengths, resolution, cable length and socket connector can be requested.

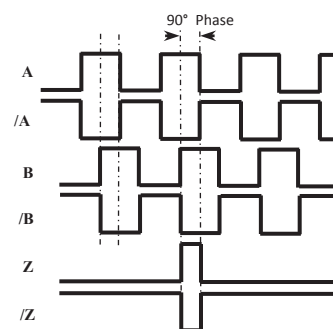
They are made of an incremental encoder, activated by the stroke of a, winding or unwinding, stainless steel wire. A special feature is their easy assembling. The linking together to a display or an electronic positioner supplies an excellent system to measure the dimensions on machine tools, automatic, wood, marble, glassworking machinery etc.

TECHNICAL SPECIFICATIONS

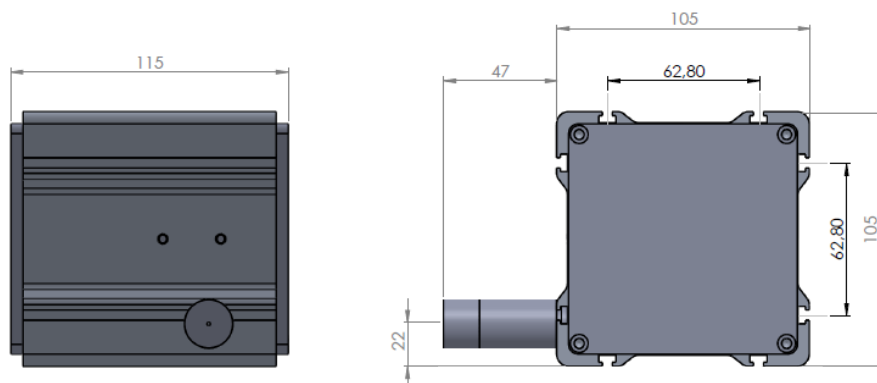
Power Supply	10...30VDC \pm 20% , 5VDC \pm 5% 5...24VDC \pm 20% , 5...30VDC \pm 20%
Resolution (mm / Pulse)	0.4, 0.2(Standard), 0.1mm (Please ask for the other requests)
Stroke Length (mm)	1000, 1500, 2000, 2500, 3000, 4000, 5000, 5700 (Please ask for the other requests)
Accuracy	\pm 0,4 mm/meter
Maximum Speed	2 m/s
Output Signals	AB , ABZ, AB/A/B, ABZ/A/B/Z
Maximum Output Current	Max. 60 mA per channel
Working Temperature	- 25 to +85 °C
Relative Humidity	10 to 90%
Weight	1.000 grams

PIN NO	SIGNAL	CABLE COLOR
1	A	YELLOW
2	/B	WHITE
3	+V	RED
4	0 V	BLACK
5	/A	BLUE
6	B	GREEN
7	/Z	GREY
8	Z	PINK
9	EARTH	SHIELD

In the left tablet he cable colors of sensors output signals are given. If the control circuit is suitable in the Line Driver sensors of the not output signals (/A, /B, /Z) have to be added to the system. If it is not suitable /A, /B, /Z signal cables must be fixed as insulated separately. Don't forget that these edges have electricity too.



MECHANICAL DIMENSIONS

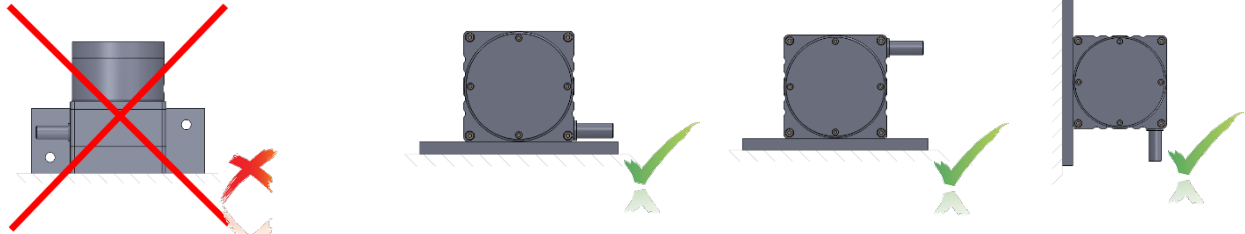


MOUNTING - WARNINGS

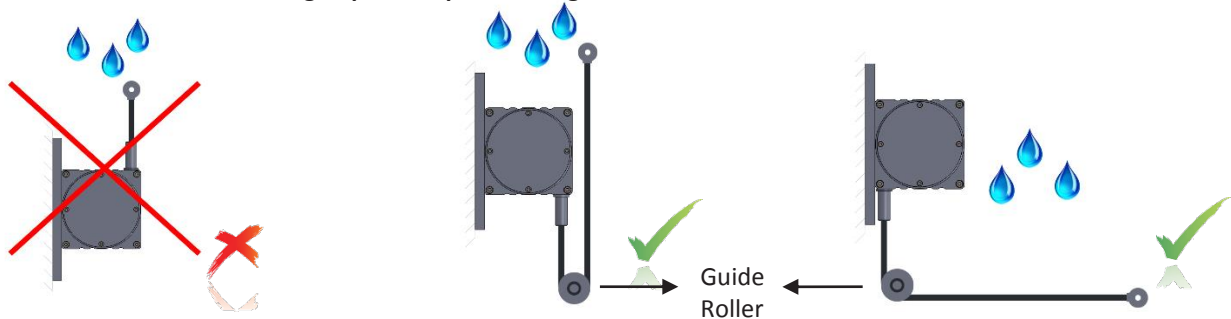
1. Do not release the wire suddenly, after pulling.



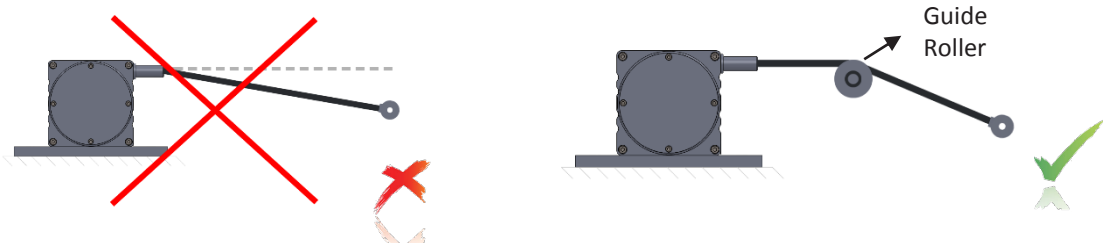
2. The wire encoder must be mounted vertically in position, not horizontally.



3. If there is the possibility of splashing of water (like rain) on the device, the wire outlet must not look upwards. If the wire needs to go upwards, please use guide rollers.



4. The wire should not be pulled with an angle. If needed, please use guide rollers.



Failure to comply with these recommendations will lead to malfunctions, which will not be covered by the warranty.

Order Code

Model

AWE 220

AWE 220

XX

Resolution

04 : 0,4 mm / Pulse
02 : 0,2 mm / Pulse (Standard)
01 : 0,1 mm / Pulse

* Please ask us for other requests

Stroke Length

1000 : 1000 mm
1500 : 1500 mm
2000 : 2000 mm
2500 : 2500 mm
3000 : 3000 mm
4000 : 4000 mm
5000 : 5000 mm
5700 : 5700 mm

* Please ask us for other requests

XXX

XXX

Power Supply and Output

PP : 10...30 VDC Supply
: 10...30VDC Output
TTL : 5 VDC Supply
: 5 VDC TTL RS422 Line Driver Output
HTL : 10...30 VDC Supply
: 5 VDC TTL RS422 Line Driver Output
HPL : 5...24 VDC Supply
: 5...24 VDC Push-Pull Output
PTL : 5...30 VDC Supply
: 5 VDC TTL RS422 Line Driver Output

Output Signals

3 (A,B,Z)
6 (A,/A,B,/B,Z,/Z)

X

3M

Cable Length

3M : 3M (standard)
5M : 5M
10M : 10M
S16 : M16 Socket Connector
S23 : M23 Socket Connector

* Please ask us for other cable lengths and socket connectors