

# SC

## ENCODER COUPLINGS



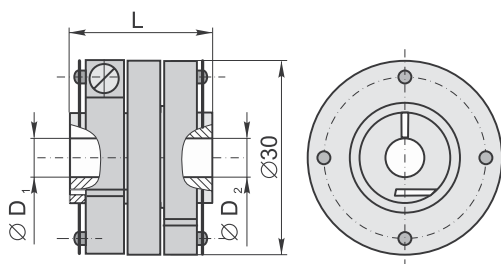
Coupling is a device which connects two shafts with for purpose of transmission motion. Coupling compensates geometrical misalignments and axial motion of connected shafts, enables the encoder work within specified accuracy and prevents excessive bearing load.

Permissible shaft misalignments must be kept within limits as shown in the table below.

### MECHANICAL DATA

Coupling model	SC30	SC70	SC98-1	SC98-2
Kinematic accuracy (with parallel offset $\leq 0.05$ mm and angular misalignment $\leq 0.09^\circ$ )	$\pm 10$ arc sec	$\pm 2$ arc sec	$\pm 0.5$ arc sec	$\pm 1$ arc sec
Torsional rigidity	150 Nm/rad	4000 Nm/rad	6000 Nm/rad	4000 Nm/rad
Permissible torque	0.1 Nm	0.5 Nm	1 Nm	1 Nm
Moment of inertia (approx.)	$3 \times 10^{-6}$ kgm <sup>2</sup>	$2 \times 10^{-4}$ kgm <sup>2</sup>	$2 \times 10^{-4}$ kgm	$1.7 \times 10^{-4}$ kgm <sup>2</sup>
Permissible radial misalignment	$\leq 0.2$ mm	$\leq 0.3$ mm	$\leq 0.3$ mm	$\leq 0.3$ mm
Permissible angular error	$\leq 1^\circ$	$\leq 0.5^\circ$	$\leq 1^\circ$	$\leq 2^\circ$
Permissible axial misalignment	$\leq 0.2$ mm	$\leq 0.2$ mm	$\leq 0.2$ mm	$\leq 0.2$ mm
Permissible shaft speed	16000 rpm	3000 rpm	1000 rpm	1000 rpm
Weight	0.027 kg	0.22 kg	0.25 kg	0.21 kg
Encoder compatibility	A28, A36, AK36, AM36, AK50, A58M, A58B, A58C, A58C2, A58C3, A58D, AK58M, AK58B, AK58C, AK58C2, AK58C3, AK58D, AP58, AM58M, AM58B, AM58C, AM58C2, AM58C3, AM58D.	A110	A170	A170

### SC30



L

22

30

D<sub>1</sub>

D<sub>2</sub>

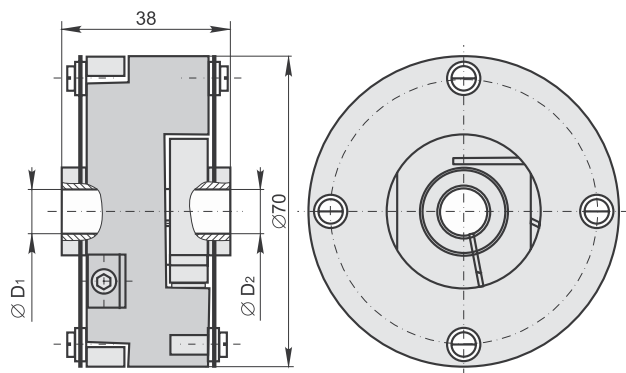
Ø4H7, Ø5H7, Ø6H7, Ø7H7,

Ø8H7, Ø10H7, Ø1/4",

Ø5/16", Ø3/8"



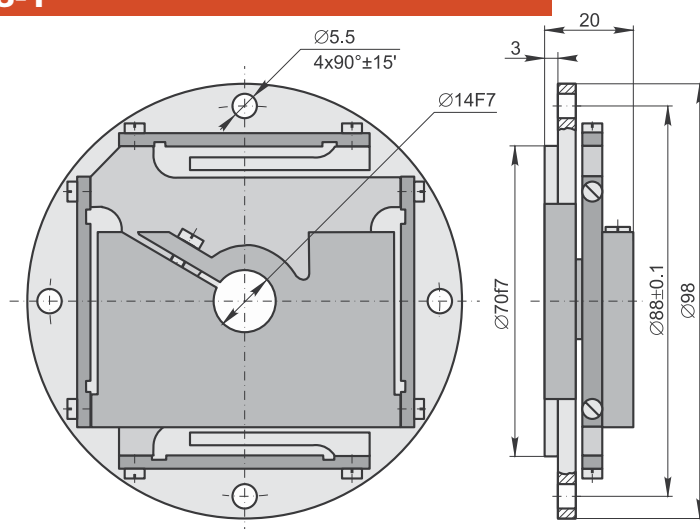
## SC70



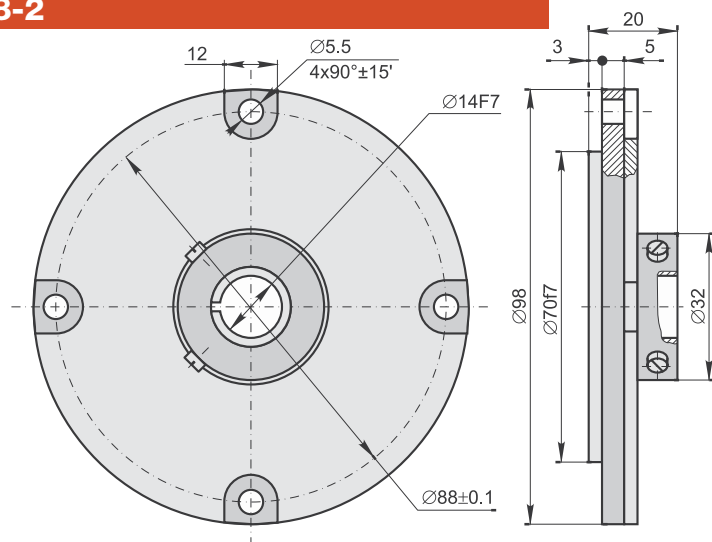
D <sub>1</sub>	D <sub>2</sub>
Ø10F7	
	Ø14F7



## SC98-1



## SC98-2



## ORDER FORM

SC XX - XX / XX - XX

MODEL:	DIAMETER D <sub>1</sub> :	DIAMETER, D <sub>2</sub> :	*LENGTH:
SC30	04 - Ø4mm	04 - Ø4mm	22 - 22mm
SC70	05 - Ø5mm	05 - Ø5mm	30 - 30mm
SC98-1	...	...	
SC98-2			*only for SC30
ORDER EXAMPLES:		1) SC30-05/05-22 2) SC98-2 3) SC70-10/14	